

**Expertise**  
That Runs Far and Wide.



**Ammonia Energy Association Presentation**  
Atlanta Nov 12<sup>th</sup> -15<sup>th</sup>



# The History of Southern Devall

---

## 120 Years of Operating History

### The Merger:

Devall Towing, founded in 1952, and Southern Towing, established in 1958, are merging. Merger activities are expected to conclude by the end of 2023. Until then, we will operate as separate companies under common ownership with a shared board of directors.

### Our New Company:

The new company, **Southern Devall**, will bring together more than 120 years of experience backed by more than 230 barges, 70 towboats, and the expertise of over 700 mariners to safely transport chemicals and liquid fertilizers on all of America's inland and coastal waterways.

---





# About Us

## Our Reach

Our vessels operate on **all waterways** east of the continental divide



## Locations

- Sulphur, LA
- Hackberry, LA
- Plaquemine, LA (LMR Mile 199)
- Groves, TX
- Orange, TX
- Houston, TX
- Victoria, TX
- Memphis, TN

- Inland Routes
- Offshore Routes
- Headquarters



# Our Services

Barge  
Line

Fleeting

Diesel  
Services

## 1 Diverse barge & towboat fleet:

### Liquified Gas-Barges: 30k bbl Barges:

- Cryogenic  $\text{NH}_3$
- Pressurized

- Lined
- Unlined
- High-heat cargoes
- Polymerizing cargoes
- $\text{O}_2$  sensitive cargoes

### 35k bbl

### Offshore Barges:

- Fully certificated for international voyages

### 10k bbl Barges:

- Stainless steel
- Lined
- Unlined
- Heated barges
- "Poison Class" design

### 70+ Towboats:

- Retracts
- Canal Boats
- River Boats
- 1,200 to over 4,000 h.p.

## 2 Custom-designed barges:

### Liquified Gas-Barges:

- Refrigeration
- Barge-to-pipeline transfer barge
- Insulated pressure barges

### 10k bbl Tank-Barges:

- High-heat & highly oxygen sensitive designs
- Parcel tank barges (multi-grade full segregation)
- Dual cargo sulfuric acid barges
- Ultra-low & ultra-high density cargo designs

## 3 Marine Asset Management & Operation

## 4 Lightering Management

## 5 Barge Fleeting, Shifting, & Tankering

## 6 Engine Dealership

## 7 Maintenance Services

## 8 Large Generator Rentals

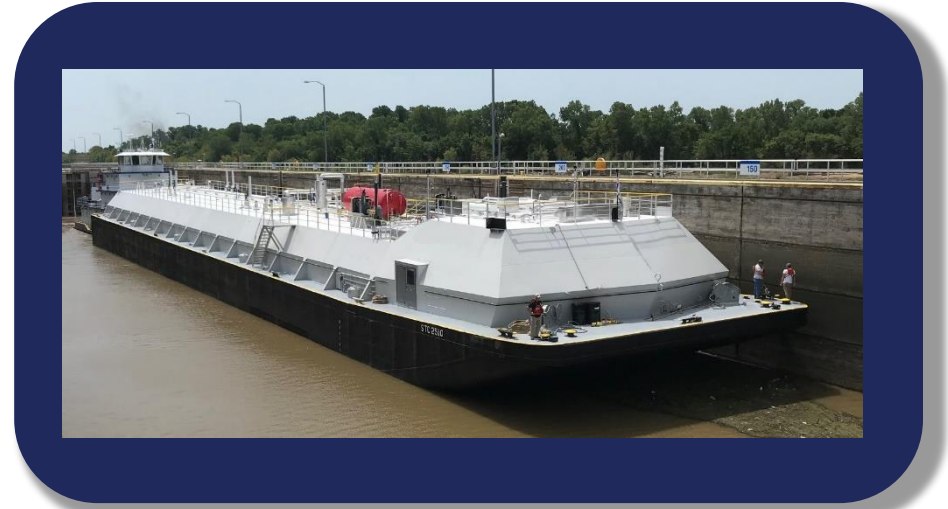




# AMMONIA

---

**Southern Devall has the largest ammonia barge fleet in the United States.**



- Total Ammonia transfers in 2022 was **642**
- Total ammonia transfers to date in 2023 are **358**

**We are in the process of building and designing two new ammonia barges.**

---

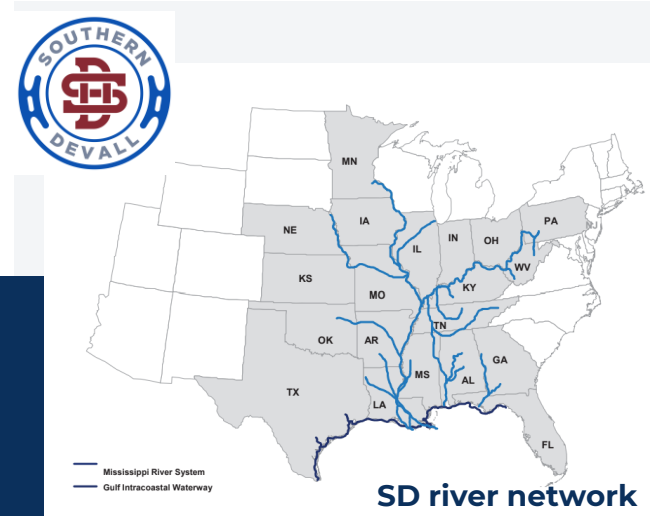
# PILOT PROJECT Southern Devall

DCBL 57 barge retrofit project launched to prove ammonia-powered solution in a maritime environment

Targeting development of US Gulf Coast into an ammonia bunkering hub to support ammonia-powered shipping

## Key project synergy:

Strategic positioning for zero-emission technology alongside low carbon ammonia development



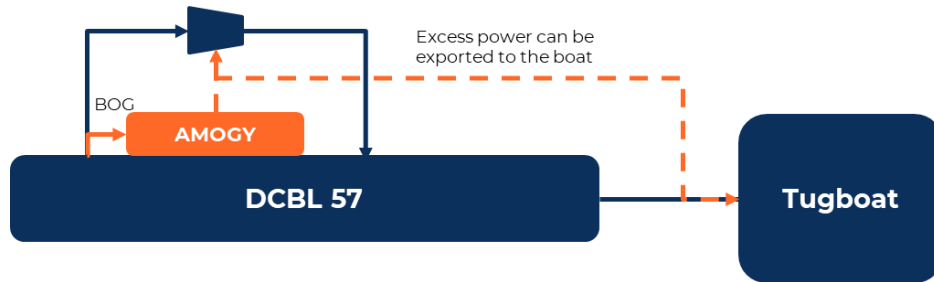
DCBL 57



# Pilot Project DCBL 57 Timeline

**Scope:**

- Supplement diesel gensets with 2 x 200kW Amogy powerpacks
- Phase 1: pilot project beginning in 2H24
- Phase 2: first commercial deployment of Amogy powerpacks







## Industry Fuel: The Messy Middle

Current state	Middle	Future
Tier 1,2,3 & 4 Engines  Diesel engines for propulsion Bio Fuel used at 10% ratio	<b>Diesel /Electric Propulsion</b> Internal combustion engines burning; Methanol, LNG ,Bio Fuels	<b>Internal Combustion Propulsion</b>  engines burning Ammonia with pilot fuel  <b>Full Electric Propulsion</b> Ammonia / Hydrogen for marine fuel Ammonia reformer to use Hydrogen via Fuel Cell

7

6

5



4

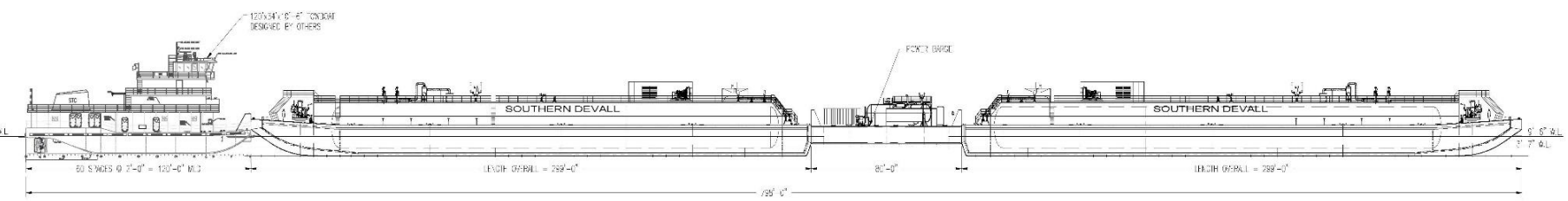
3

2



GENERAL NOTE

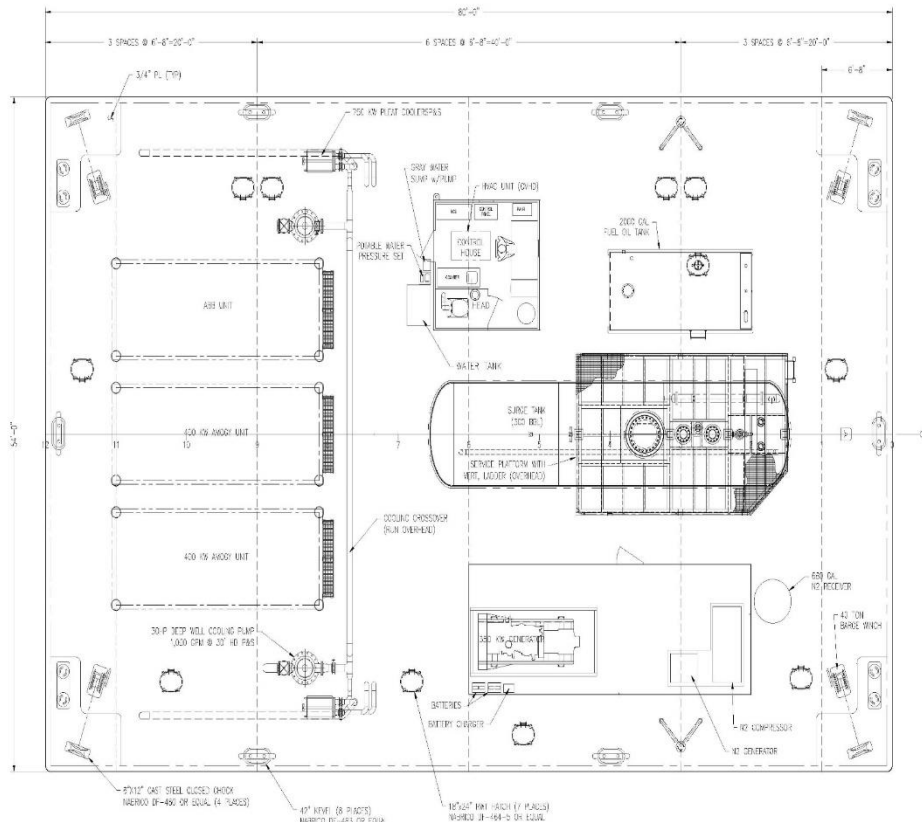
- 1. INDUSTRY PRACTICES TO BE USED UNLESS OTHERWISE SPECIFIED TO CONTRADICT THIS PLAN.
- 2. POWER BARGE IS TO BE A USED ASSOCIATED WITH BARGE WITH AMMONIA TOWER T-7, C-7, S.
- 3. CARGO BEING HANDLED IS ANHYDROUS AMMONIA AT 28° TO 32° F.



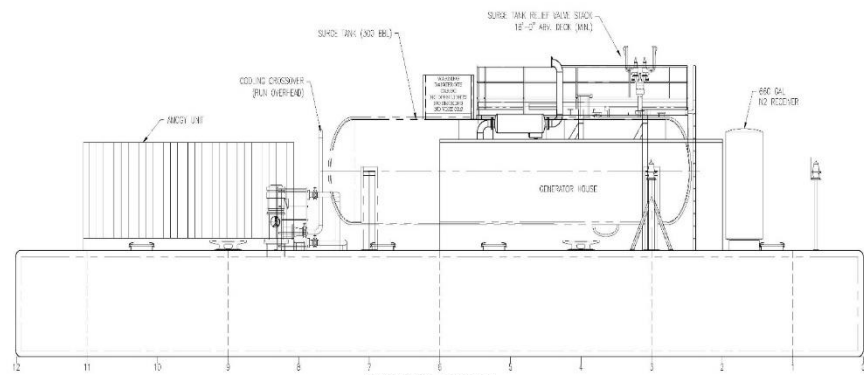
TWO FULLY LOADED AMMONIA BARGES WITH POWER BARGE IN TOW

PRELIMINARY

NO.	DATE	BY	CHKD
<b>GUARINO &amp; ASSOCIATES</b> 18000 E. 11th Avenue, Suite 100 Denver, CO 80231			



**MAIN DECK**  
SCALE 3/16"=1'-0"



**OUTBOARD PROFILE**  
SCALE 3/16"=1'-0"

**GENERAL NOTES**

1. VESSEL IS TO BE AN INSPECTED 48 CFR SUBPARTER D & C HULL POWER BARGE BARGE.
2. CARGO BEING HANDLED IS AMMONIUM NITRATE AT A TEMPERATURE OF APPROXIMATELY -92 TO 33 F.
3. ALL EQUIPMENT ON DECK IS TO BE INSTALLED ON FOUNDATIONS OR SHIMS AT LEAST 6" ABOVE THE DECK.
4. PIPING SHOWN ON THIS DRAWING IS FOR REFERENCE ONLY AND DOES NOT NECESSARILY REFLECT THE ACTUAL LOCATIONS OF THE PIPING RUNS.

**PRINCIPAL CHARACTERISTICS**

LENGTH	80'-0"
BEAM	54'-0"
DEPTH	8'-6"
APPROX. FULL LOAD DRAFT	7'-0"

PRELIMINARY

REV.	DATE	DESCRIPTION	BY	CHKD.
REVISIONS				
<b>GUARINO &amp; COX, LLC</b> 16396 HETZEL RD., SUITE 203 COMPTON, CA 90221				
THE USE OF THIS PLAN AND / OR DISCLOSURE OF ITS CONTENTS, IN ANY MANNER, IN WHOLE OR IN PART, AND / OR ITS REPRODUCTION WITHOUT THE PREVIOUS WRITTEN PERMISSION OF GUARINO & COX, LLC IS STRICTLY PROHIBITED.				
APPROVALS				
ADS				
USDR				
SOUTHERN DEVALL				
80' x 54' x 8'-6" NH3 FUEL CELL POWER BARGE				
GENERAL ARRANGEMENT				
DRAWN BY:	JMS	DATE:	9/7/23	DWG NO.:
CHKD BY:		TITLE No.:	TBD	A-1
SCALE: AS NOTED		C&C JOB No. 23-020		REV. P.



# Expertise That Runs Far and Wide.



As America's premier maritime services company, we are the partner of choice for safely transporting chemicals and liquid fertilizers along our nation's waterways.

314-520-7703  
[s.lewis@southerndevall.com](mailto:s.lewis@southerndevall.com)  
[www.southerndevall.com](http://www.southerndevall.com)